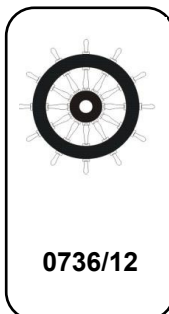
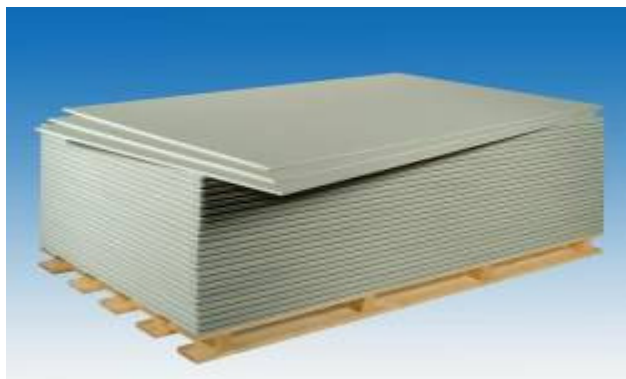


Rigidur H Marine 10



Characteristics	The Gypsum Fibreboard Rigidur H Marine 10 contains gypsum, cellulosic fibres and mineral additives.
Application	An ideal material for dry interior construction for walls and ceilings on ship building. Perfectly suited for abuse-resistant walls and also provides good fire protection.
Installation	According to Rigidur installation guide

Technical specifications

Classification	GF-C1-I-W2		as per DIN EN 15283-2
Reaction to fire rating	A2-s1,d0 non-combustible		as per DIN EN 13501-1
EG-Assement (Module B)	Certificate-No. 107.088		
U.S. Coast Guard No.	164.109/EC0736/ 107.088		
Board thickness	10	[mm]	as per DIN EN 15283-2
Tolerance in board thickness	±0,2	[mm]	as per DIN EN 15283-2
Density approx.	1200	[kg/m ³]	as per DIN EN 15283-2
Area weight approx.	11,5	[kg/m ²]	as per DIN EN 15283-2
Maximum tolerance in length	+0/-1	[mm]	as per DIN EN 15283-2
Maximum tolerance in width	+0/-1	[mm]	as per DIN EN 15283-2
Maximum tolerance in diagonal	≤ 2	[mm]	as per DIN EN 15283-2
Flexural strength	5,5	[N/mm ²]	as per DIN EN 15283-2
Modulus of elasticity	3600	[N/mm ²]	as per DIN EN 15283-2
Surface hardness as per Brinell	35	[N/mm ²]	as per DIN EN ISO 6506-1
Dilatation due to changing of relative humidity by 30% (20°C)	0,045	[%]	as per DIN EN 318

The information in this publication is based on our current technical knowledge and experience. Due to the wide range of factors that may affect the processing and use of our products, it does not absolve users from responsibility for performing their own inspections and tests, and serves only as a general guideline. No legally binding guarantee of specific properties or suitability for a concrete purpose may be inferred. Users shall be responsible for ensuring that any trademarks and existing laws and provisions are observed at all times. We reserve the right to make changes in the interest of technical progress.

Rigidur H Marine 10

Thermal conductivity $\lambda_{10, trocken}$ λ_R	0,202 0,350	[W/(m x K)]	as per DIN EN 12667
Thermal dilatation	0,015	[mm/(m x K)]	referring to DIN EN 318
Stable moisture content at 20°C, 65% relative humidity approx.	1-1,3	[%]	as per DIN EN 322
Water vapour permeability μ	19		as per DIN EN ISO 12527
Water vapour diffusion-equivalent air layer thickness s_d	0,19	[m]	as per DIN EN ISO 12527
Surface water absorption after 30 minutes	≤ 1500	[g/m ²]	as per DIN EN 15283-2
Thickness dilatation after 24 hours immersion in water	< 2	[%]	as per DIN EN 317

The information in this publication is based on our current technical knowledge and experience. Due to the wide range of factors that may affect the processing and use of our products, it does not absolve users from responsibility for performing their own inspections and tests, and serves only as a general guideline. No legally binding guarantee of specific properties or suitability for a concrete purpose may be inferred. Users shall be responsible for ensuring that any trademarks and existing laws and provisions are observed at all times. We reserve the right to make changes in the interest of technical progress.